



29 Monash Street Lalor VIC

4 2 2

### Another BISI Property Gone... \$660,000

\$ 660,000

Another BISI vendor review available at [RateMyAgent.com.au](https://www.ratemyagent.com.au)

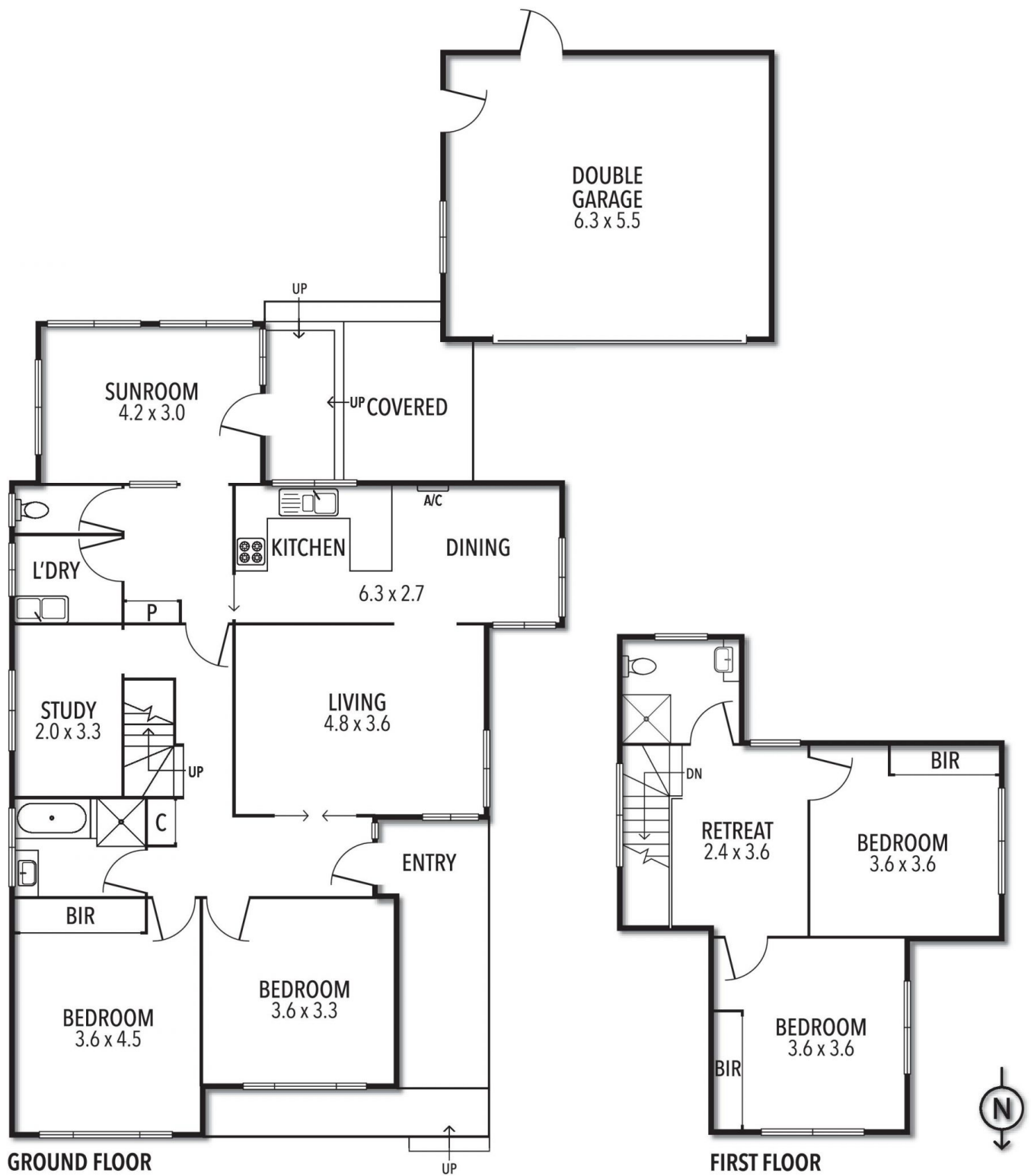
**Type** : House  
**Land Size** : 539 sqm  
**View** : <https://www.thebisiagent.com.au/sale/vic/north/lalor/residential/house/5625404>

Step into this lovingly maintained and extended home and you will instantly feel the wealth of comfort and space it offers for all the family. Perfectly placed next door to a cute kid's park & backing onto Partridge Reserve, with a location that offers a great sense of escape, but still so easy to get to local shopping at Epping Plaza and popular schools.

A two-level floorplan allows for great independence, with the lower level offering 3 bedrooms or separate study, formal lounge room, easy to like kitchen and dining area, central bathroom, separate toilet, separate laundry and sunroom retreat. Upstairs 2 robed bedrooms share a nice bathroom and easy 2nd living area option.

Added comforts include: Wide side drive to double garage, ducted heating, security roller shutters, split system

**John Bisignano**  
 03 9489 1030



THE ABOVE PLAN IS AN ARTIST'S IMPRESSION ONLY, IT INCLUDES ELEMENTS THAT ARE FOR DISPLAY PURPOSES ONLY AND MAY NOT BE TO SCALE. LANDSCAPING SHOWN IS INDICATIVE ONLY. DIMENSIONS ARE APPROXIMATE.