



26 Ely Street Eltham VIC

 4
  2
  4

Another BISI Property GONE At Online Auction...

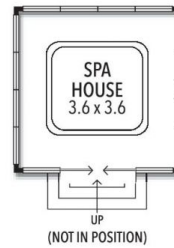
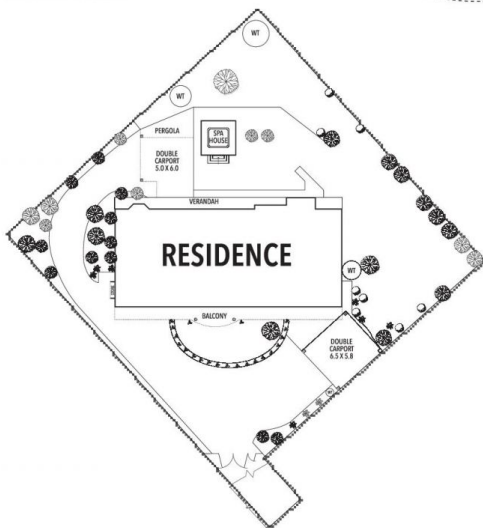
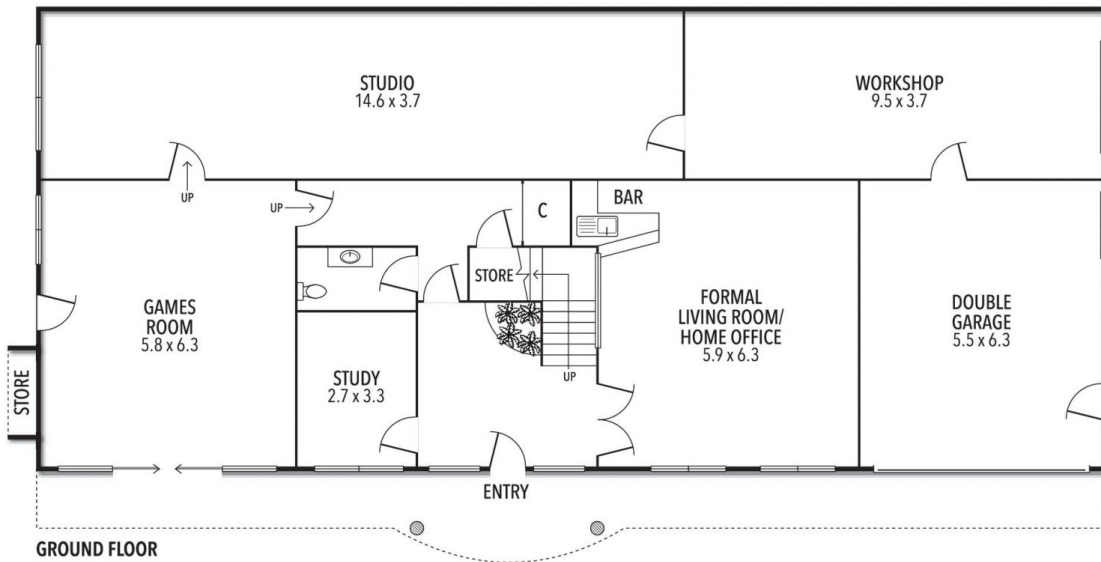
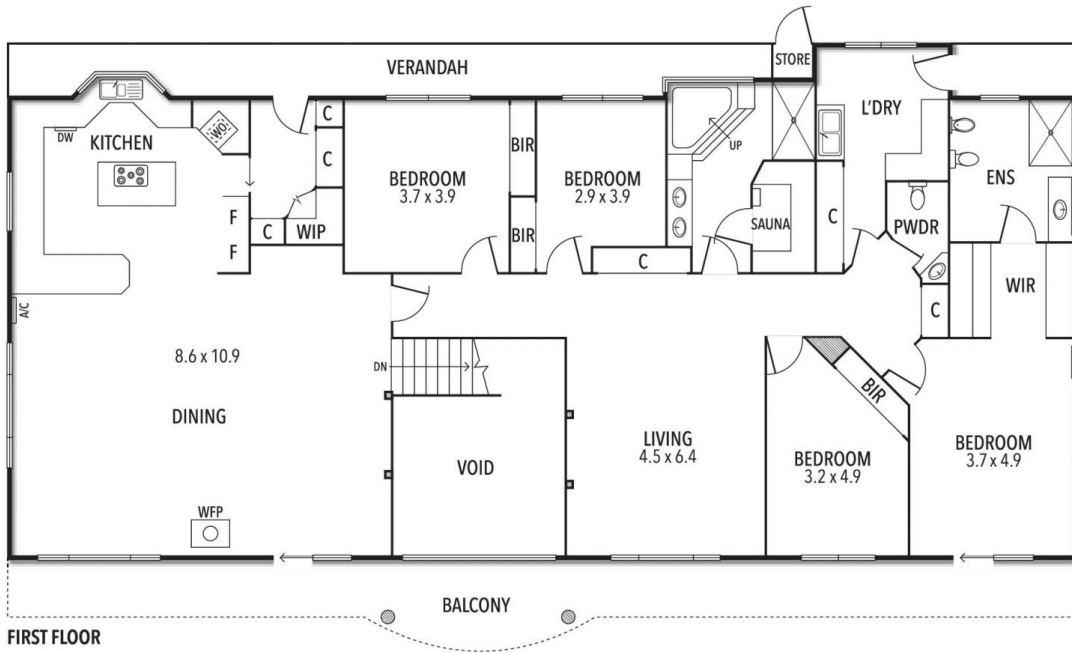
Welcome Home To A Spacious Paradise?

Enjoying a coveted elevated position in this sought-after Eltham High School precinct, is this impressive 1 owner home, sitting proudly elevated on a surprising low maintenance large garden setting measuring 1496m², which is guaranteed to deliver a long term solution for a perfect family plan for space and comfort for many years to come.

The home's crowning glory is the upper level, highlighted by glorious sunshine that fills the entire sprawling living and dining zones which flow delightfully to a full width balcony retreat enjoying distant views & naturally connects to a well-planned kitchen which walks you through into a real butler/butleress pantry and outdoors to an amazing outdoor sanctuary, which allows for a car to be driven to your backdoor for shopping bag ease. Your excitement will further continue on this level as there are 4 bedrooms with

Type : House
Land Size : 1496 sqm
View : <https://www.thebisiagent.com.au/sale/vic/north/eltham/residential/house/6564357>

John Bisignano
 03 9489 1030



THE ABOVE PLAN IS AN ARTIST'S IMPRESSION ONLY, IT INCLUDES ELEMENTS THAT ARE FOR DISPLAY PURPOSES ONLY AND MAY NOT BE TO SCALE. LANDSCAPING SHOWN IS INDICATIVE ONLY. DIMENSIONS ARE APPROXIMATE.