



4 Crawley Street Epping VIC

 3
  1
  2

Here's Value, Space & Location...

Upon entrance you will love the immediate air of relaxed warmth and light this home showcases throughout its practical and modern layout with low maintenance appeal close to schools, parklands and the convenience of Epping Plaza just moments away.

Its impressive and updated interior will delight all the family. An inviting wide entrance foyer leads through to a light filled open floorplan that enjoys three bedrooms with built in robes, well equipped central kitchen, family bathroom, separate toilet and laundry with Garage Access.

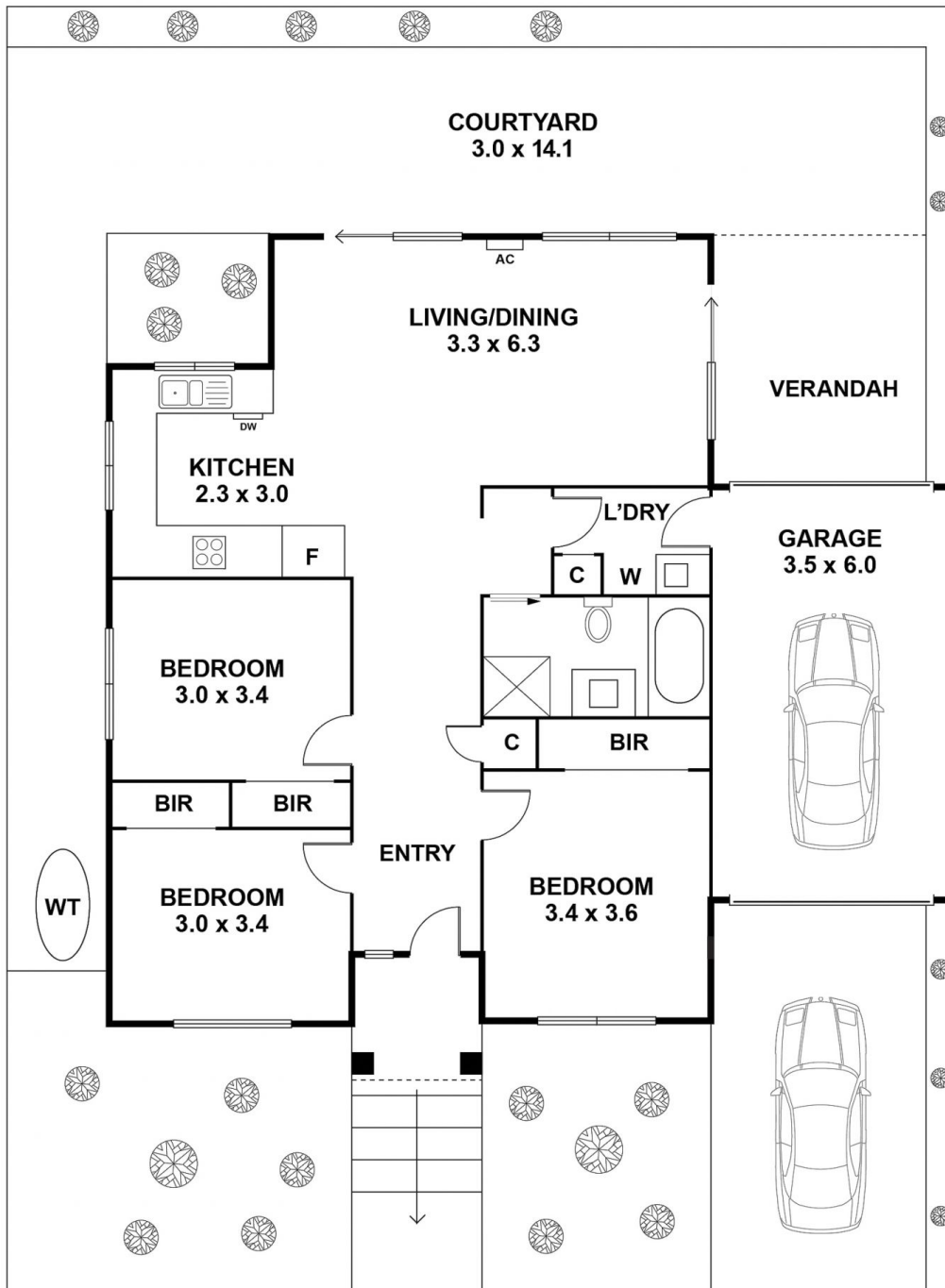
Nice surprises & necessities include: New timber polished floorboards throughout, Split System Heating/Cooling, Garage with drive through access, dishwasher, gas cooking and lots more.

Welcome Home

Type : House
Date Available : Friday, 23rd June 2023
View : <https://www.thebisiagent.com.au/lease/vic/north/epping/residential/house/7610274>

Northcote Rental Department **Mark Bisignano**
 03 9489 1030 03 9489 1030

4 CRAWLEY ST EPPING



THE ABOVE PLAN IS AN ARTIST'S IMPRESSION ONLY, IT INCLUDES ELEMENTS THAT ARE FOR DISPLAY PURPOSES ONLY AND MAY NOT BE TO SCALE. LANDSCAPING SHOWN IS INDICATIVE ONLY. DIMENSIONS ARE APPROXIMATE.