



10 O'Grady Street Clifton Hill VIC

4 1 2

Graceful Home With Huge Untapped Double Garage...

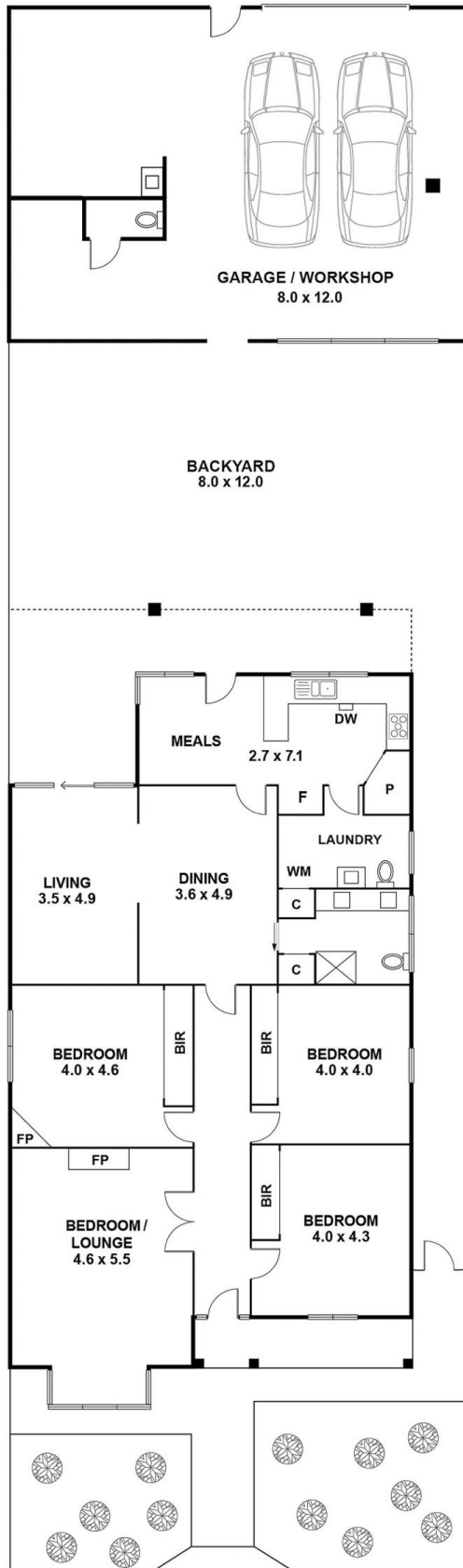
A timeless and classic home with a genuine soul, this beautifully crafted and presented home features and unbelievably large garage/studio workshop with easy access via Rose Street amongst a blissfully tranquil North facing garden setting. Steeped in tradition, this character filled homes wonderful history, meets an easy light-hearted layout, whilst offering potential to further update as required.

Rich in period detail is the front of the home with memorable decorative ceilings, lead lighting and fireplaces, showcasing an elegant formal living room or gorgeous 4th bedroom setting upon entrance. A grand entrance foyer will flow you through further to reveal 3 robed bedrooms and everyday living and kitchen zones which both enjoy an incredible back drop of established trees and birds singing in a remarkable deep shaded garden. A family sized laundry with 2nd toilet, double vanity bathroom and a well-planned kitchen will provide instant family functionality

Type : House
Land Size : 491 sqm
View : <https://www.thebisiagent.com.au/sale/vic/inner-city/clifton-hill/residential/house/7777521>

John Bisignano
 03 9489 1030

ROSE ST



O'GRADY ST

THE ABOVE PLAN IS AN ARTIST'S IMPRESSION ONLY, IT INCLUDES ELEMENTS THAT ARE FOR DISPLAY PURPOSES ONLY AND MAY NOT BE TO SCALE. LANDSCAPING SHOWN IS INDICATIVE ONLY. DIMENSIONS ARE APPROXIMATE.